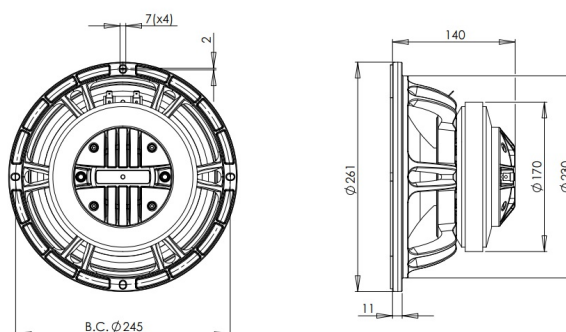


10FCX64

8Ω

Coaxials - 10.0 Inches

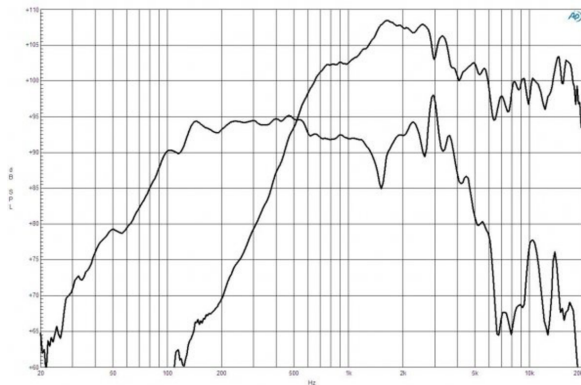


- 500 W continuous program power capacity
- 70° nominal coverage
- 65 - 18000 Hz response
- 95 dB sensitivity
- 33 mm (1.3") HF unit exit diameter

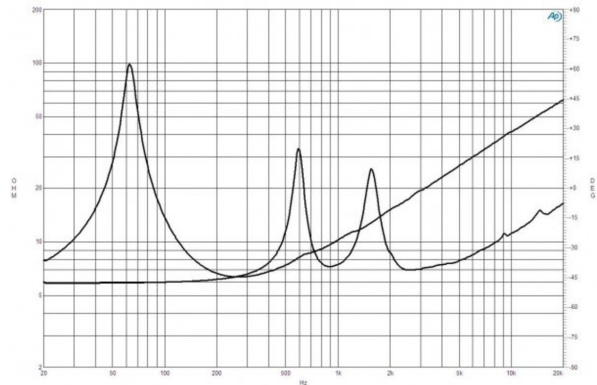
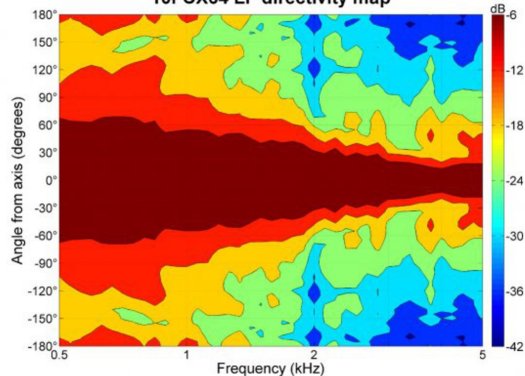


10FCX64

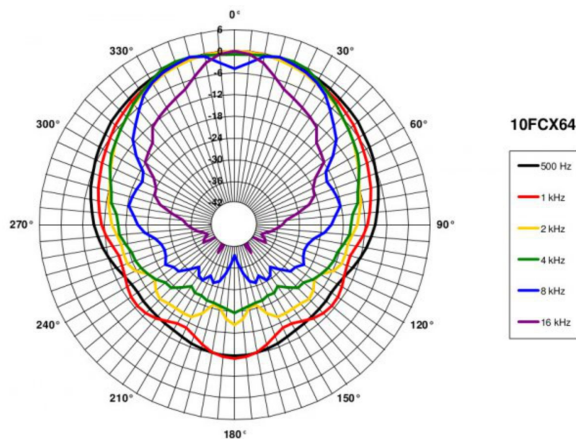
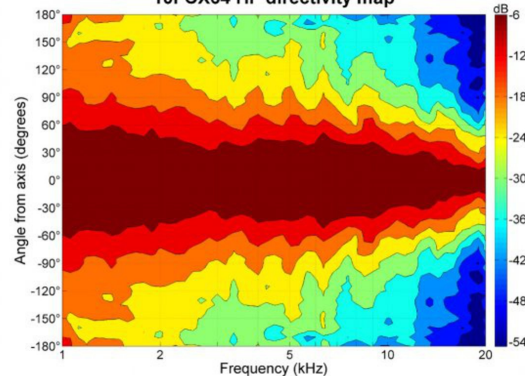
Coaxials- 10.0 Inches



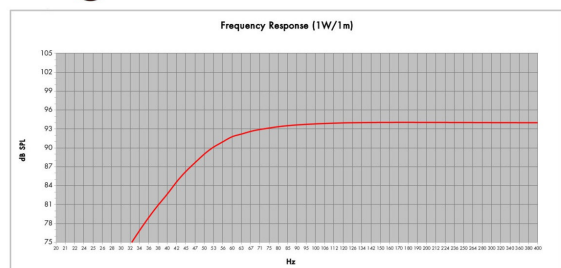
10FCX64 LF directivity map



10FCX64 HF directivity map



B&C SPEAKERS



Model: 10FCX64
Enclosure Type: Bass Reflex
Internal Net Volume (liters): 30
Tuning Frequency (Hz): 55
Frequency (-3 dB) (Hz): 56.0
Configuration: One Driver
Q_T: 7
Port Area (cm²): 60.8
Port Length (cm): 12.5

SPECIFICATIONS

Nominal Diameter	250 mm (10.0 in)
Nominal Impedance	8 Ω
Minimum Impedance LF	6.4 Ω
Minimum Impedance HF	7.0 Ω
Frequency Range	65 - 18000 Hz
Dispersion Angle ¹	70 °
Woofer Cone Treatment	WP Waterproof Front Side
Magnet Material	Ferrite -

SPECIFICATIONS LF UNIT

Sensitivity ²	95.0 dB
Nominal Power Handling ³	250 W
Continuous Power Handling ⁴	500 W
Voice Coil Diameter	64 mm (2.5 in)
Winding Material	Copper
Flux Density	0.96 T
Former Material	Kapton
Winding Depth	13.0 mm (0.51 in)
Magnetic Gap Depth	8.0 mm (0.31 in)

SPECIFICATIONS HF UNIT

Sensitivity ⁵	104.0 dB
Nominal Power Handling ⁶	80 W
Continuous Power Handling ⁷	160 W
Voice Coil Diameter	65 mm (2.5 in)
Winding Material	Aluminium
Flux Density	1.6 T
Diaphragm Material	Titanium
Recommended Crossover ⁸	1.2 kHz
Inductance	0.15 mH

B&C Speakers s.p.a.

Via Poggiomoro, 1 - Loc. Vallina, 50012 Bagno a Ripoli (FI) - ITALY - Tel. +39 055 65721 - Fax +39 055 6572312 - mail@bcspeakers.com

PARAMETERS		MOUNTING AND SHIPPING INFO		CROSSOVER
Resonance Frequency	63 Hz	Overall Diameter	261 mm (10.3 in)	
Re	5.5 Ω	Bolt Circle Diameter	245 mm (9.6 in)	
Qes	0.44	Baffle Cutout Diameter	230 mm (8.8 in)	
Qms	7.9	Depth	140 mm (5.51 in)	
Qts	0.42	Flange and Gasket Thickness	11 mm (0.43 in)	
Vas	25.0 dm ³ (0.89 ft ³)	Net Weight	5.65 kg (12.8 lb)	
Sd	320.0 cm ² (49.1 in ²)	Shipping Units	1	
η_o	1.4 %	Shipping Weight	6.55 kg (14.44 lb)	
Xmax	\pm 5.5 mm	Shipping Box 360x360x200 mm (14.17x14.17x7.87 in)		
Xvar	\pm 6.0 mm			
Mms	37.0 g			
Bl	13.4 Txm			
Le	1.2 mH			
EBP	143 Hz			

SERVICE KIT

LF recone kit	RCK10FCX648
MF replacement diaphragm	MMD620TN8M

1. Included by -6 dB down points.
2. Applied RMS Voltage is set to 2.83V.
3. 2 hours test made with continuous pink noise signal within the range Fs-10Fs. Power calculated on rated minimum impedance. Loudspeaker in free air.
4. Power on Continuous Program is defined as 3 dB greater than the Nominal rating.
5. Applied RMS Voltage is set to 2.83V.
6. 2 hour test made with continuous pink noise signal within the range from the recommended crossover frequency to 20 kHz. Power calculated on rated minimum impedance. Loudspeaker in free air.
7. Power on Continuous Program is defined as 3 dB greater than the Nominal rating.
8. 12 dB/oct. or higher slope high-pass filter.